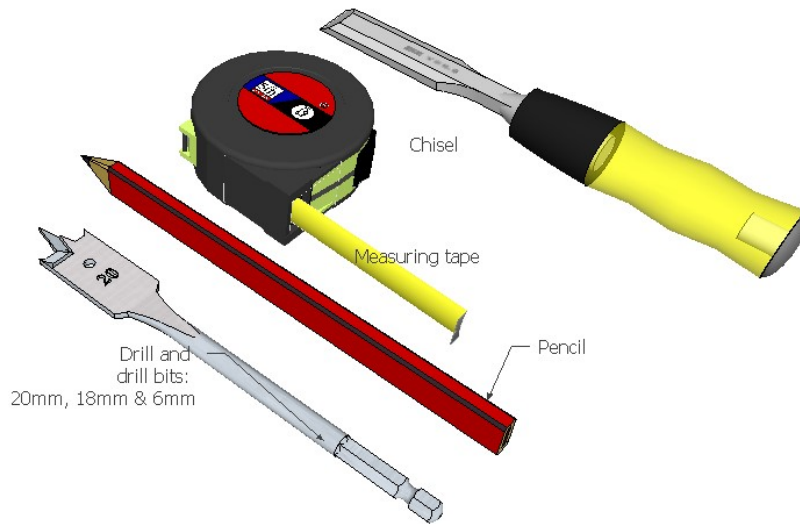


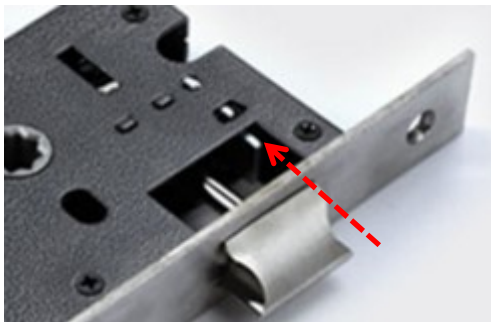
Entrance Lever Set Installation Guide

What you'll need



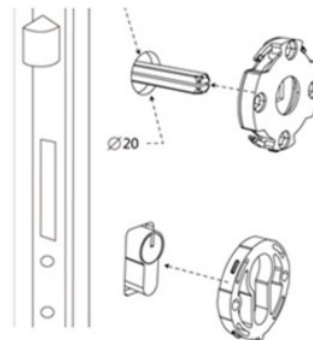
Step 1 Door Opening

Determine the correct opening direction of your door. You may need adjust the direction of the latch by pushing the latch in, and rotating it around.



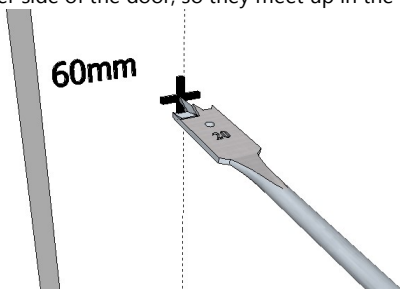
Step 4

Fix the lock body into the cavity and screw in place. Inset the spindle through the lock body and also fit the tubelock (key mechanism) through the lower of the holes in the door



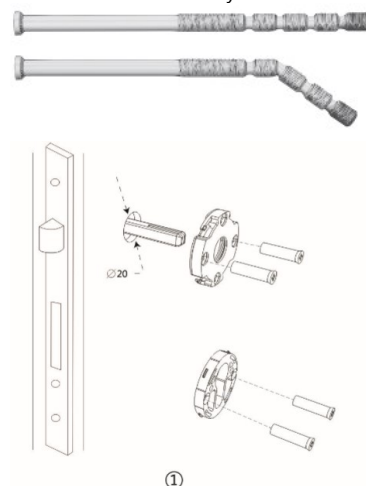
Step 2

Now mark the drill the holes in your door using the drilling template provided in these instructions. Ensure the holes are straight and level. This can be achieved by drilling half way from one side of the door, and then drilling the other half from the other side of the door, so they meet up in the middle.



Step 5

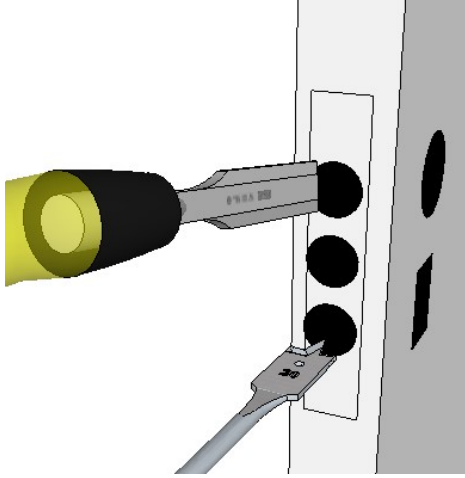
As per the image below, you will need to cut the ribbed screws to suit your door thickness, this can be done with a pair of pliers. Use these screws and their corresponding screws for the other side to fix the roses in place both for the handle and the keylock.



Step 3

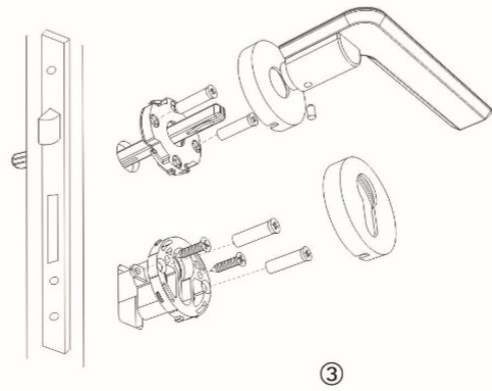
Now chisel out the cavity for the lock mechanism. As per the template, this is 173mm high, 18mm wide and 87mm deep (looking at the edge of the door). This is to be done by drilling a series of 18mm holes in a line up the door then using the chisel to form the cavity.

At this time chisel out the door frame to accept the latch box. You can use the metal striker plate as a template against the door frame. Ensure this lights up with the location of your lock mechanism on the door.



Step 5

Now fix the outer rose and door levers over the spindle on each side of the door and attach using the allen key provided and the screw located on the underside of each handle. Now you're complete !



Drilling Template

